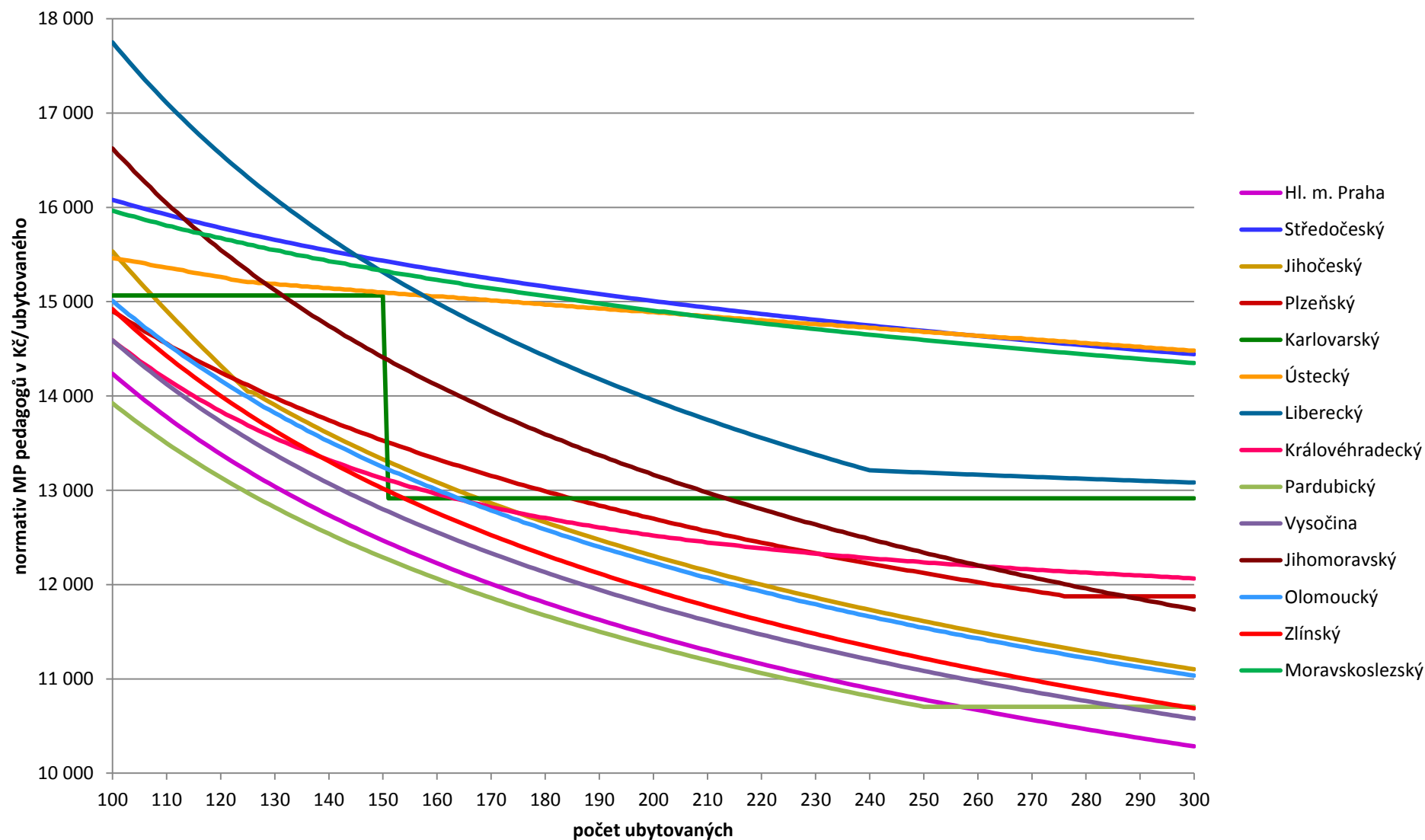


DOMOVY MLÁDEŽE

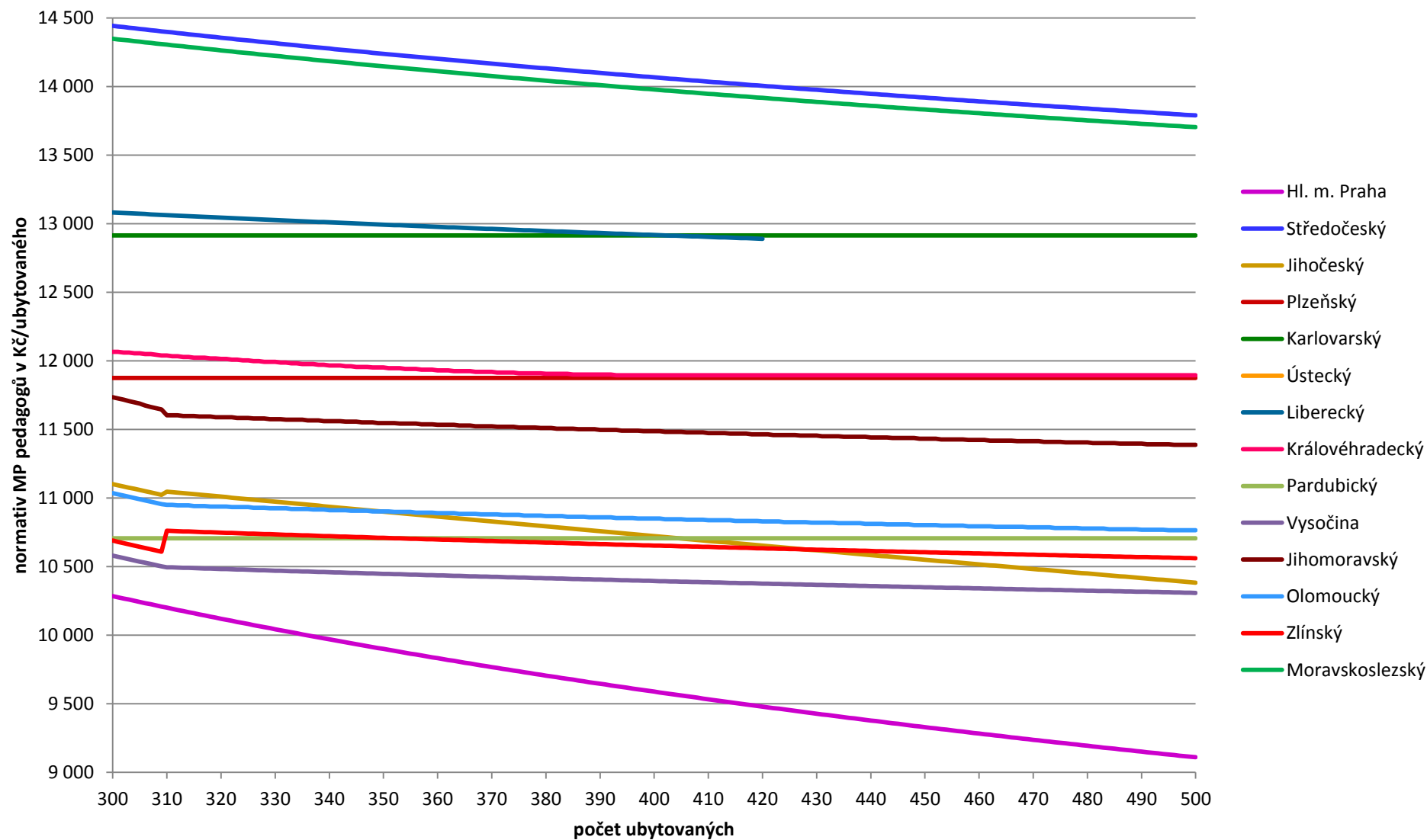
Ubytování žáci středních škol a konzervatoří

Příloha č. 6a

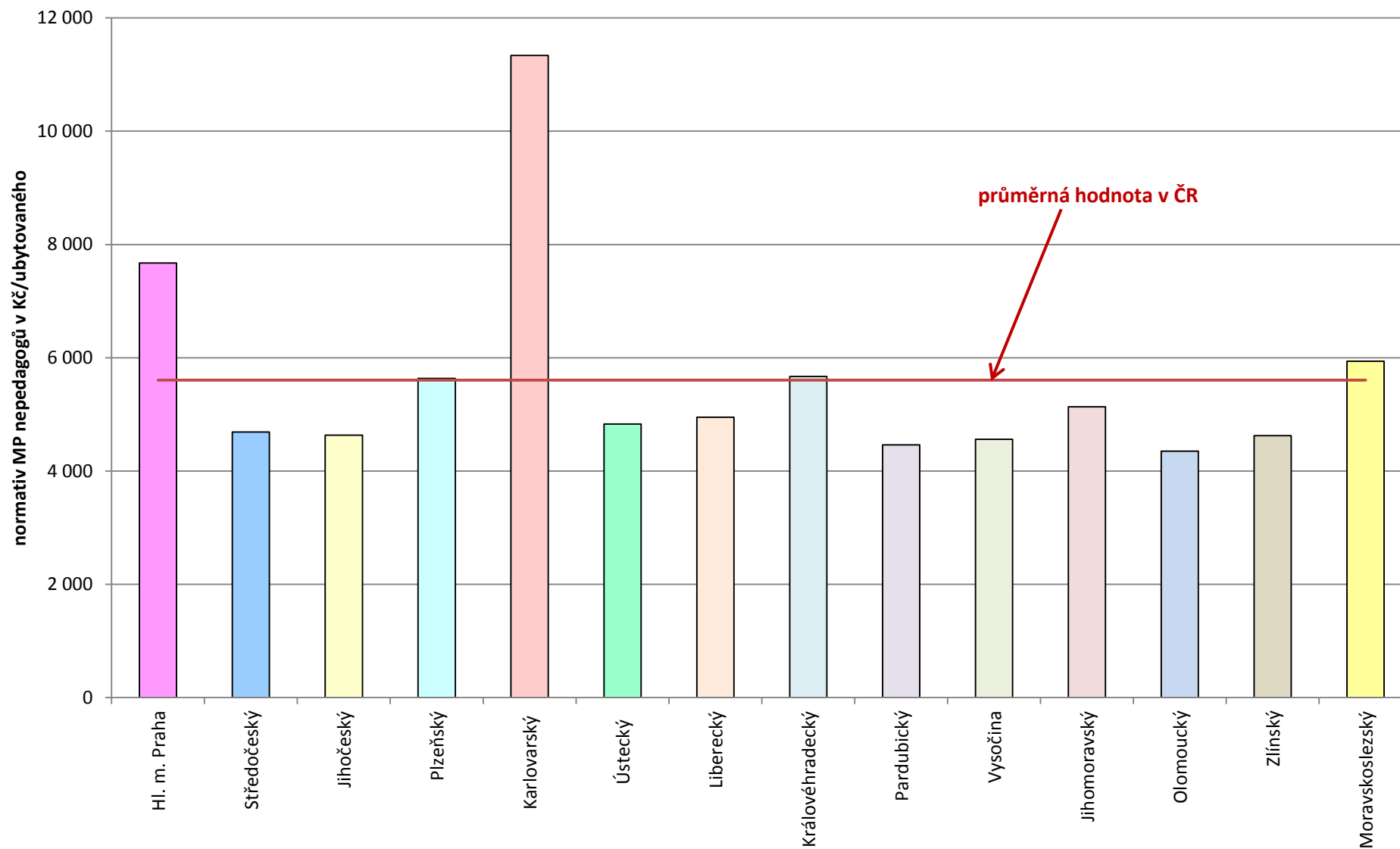
Krajské normativy mzdových prostředků pedagogů v roce 2015 Domovy mládeže - ubytování ze SŠ nebo konzervatoří (v Kč/ubytovaného)



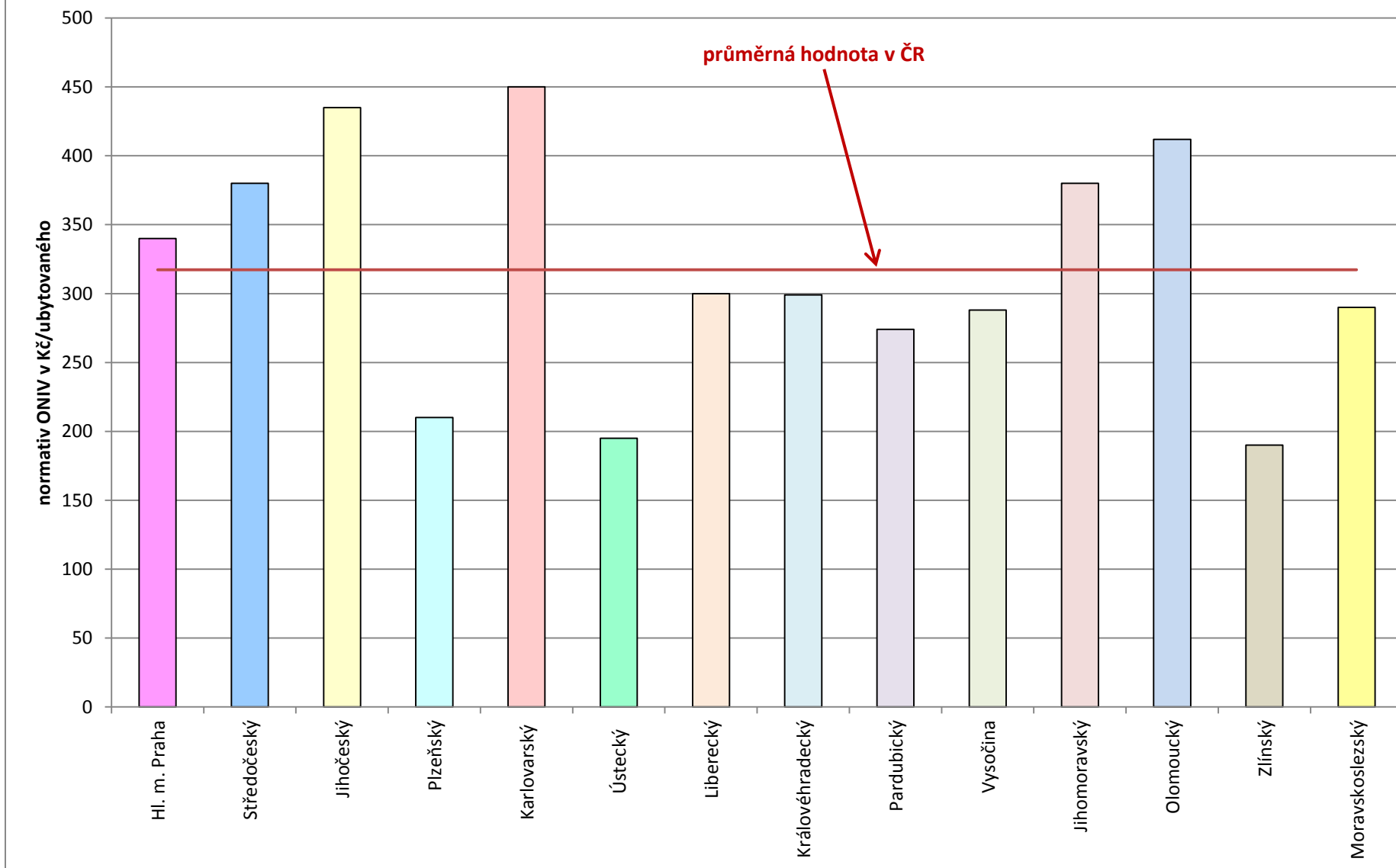
Krajské normativy mzdových prostředků pedagogů v roce 2015 Domovy mládeže - ubytování ze SŠ nebo konzervatoří (v Kč/ubytovaného)



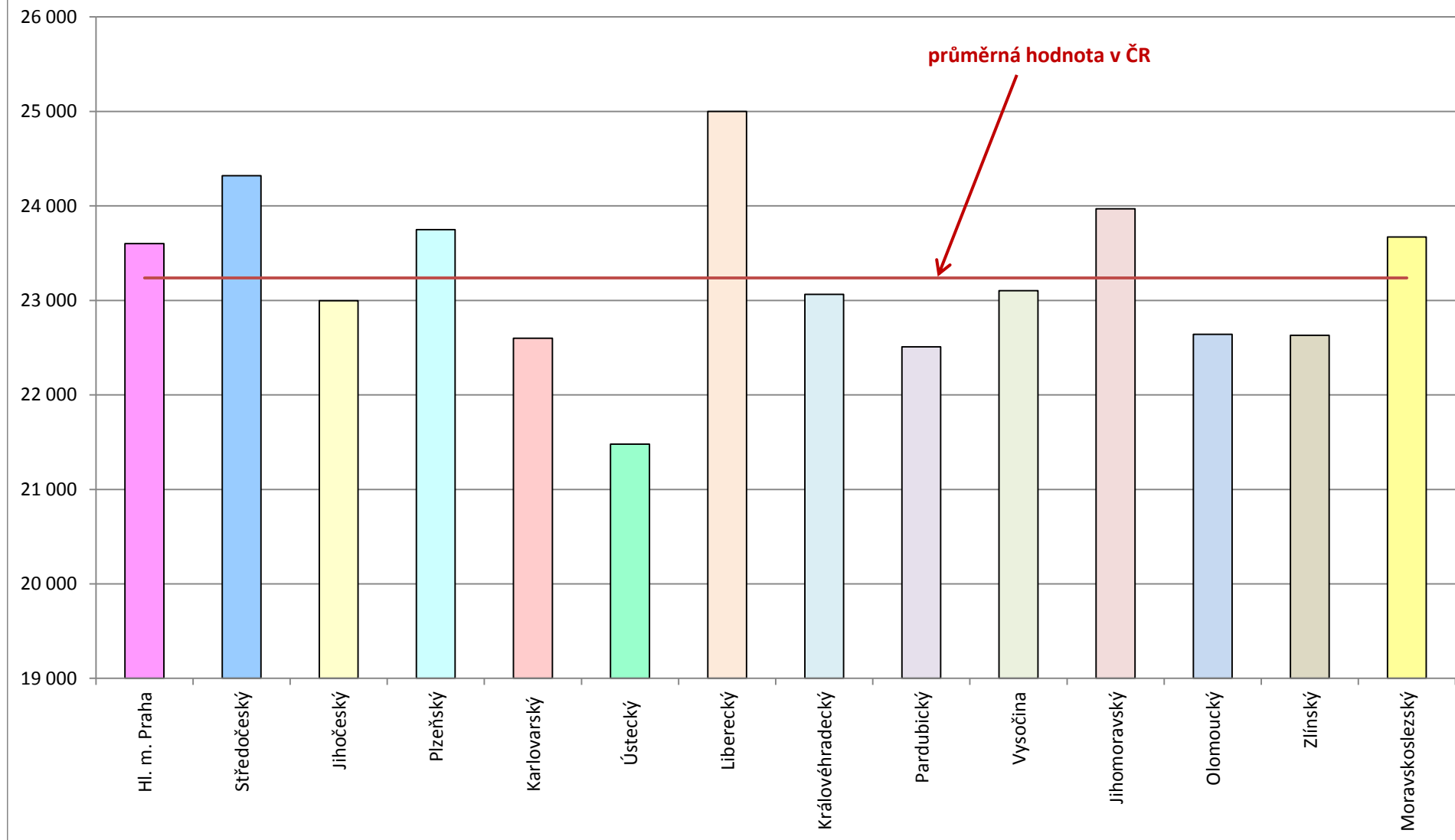
Krajské normativy mzdových prostředků nepedagogů v roce 2015 Domovy mládeže - ubytování ze SŠ nebo konzervatoří (v Kč/ubytovaného)



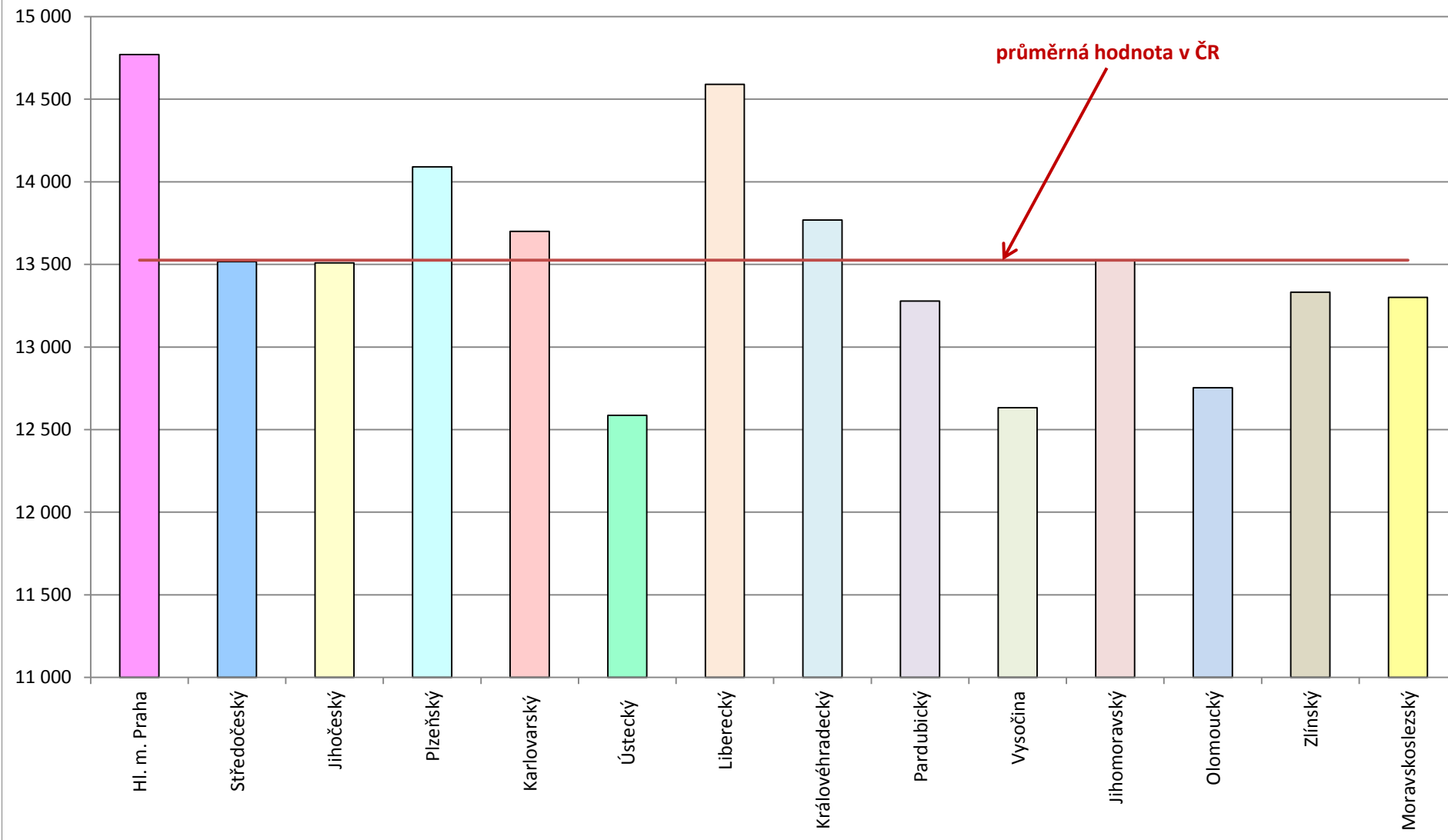
Krajské normativy ONIV v roce 2015 - při počtu 100 ubytovaných Domovy mládeže - ubytovaní ze SŠ nebo konzervatoří (v Kč/ubytovaného)



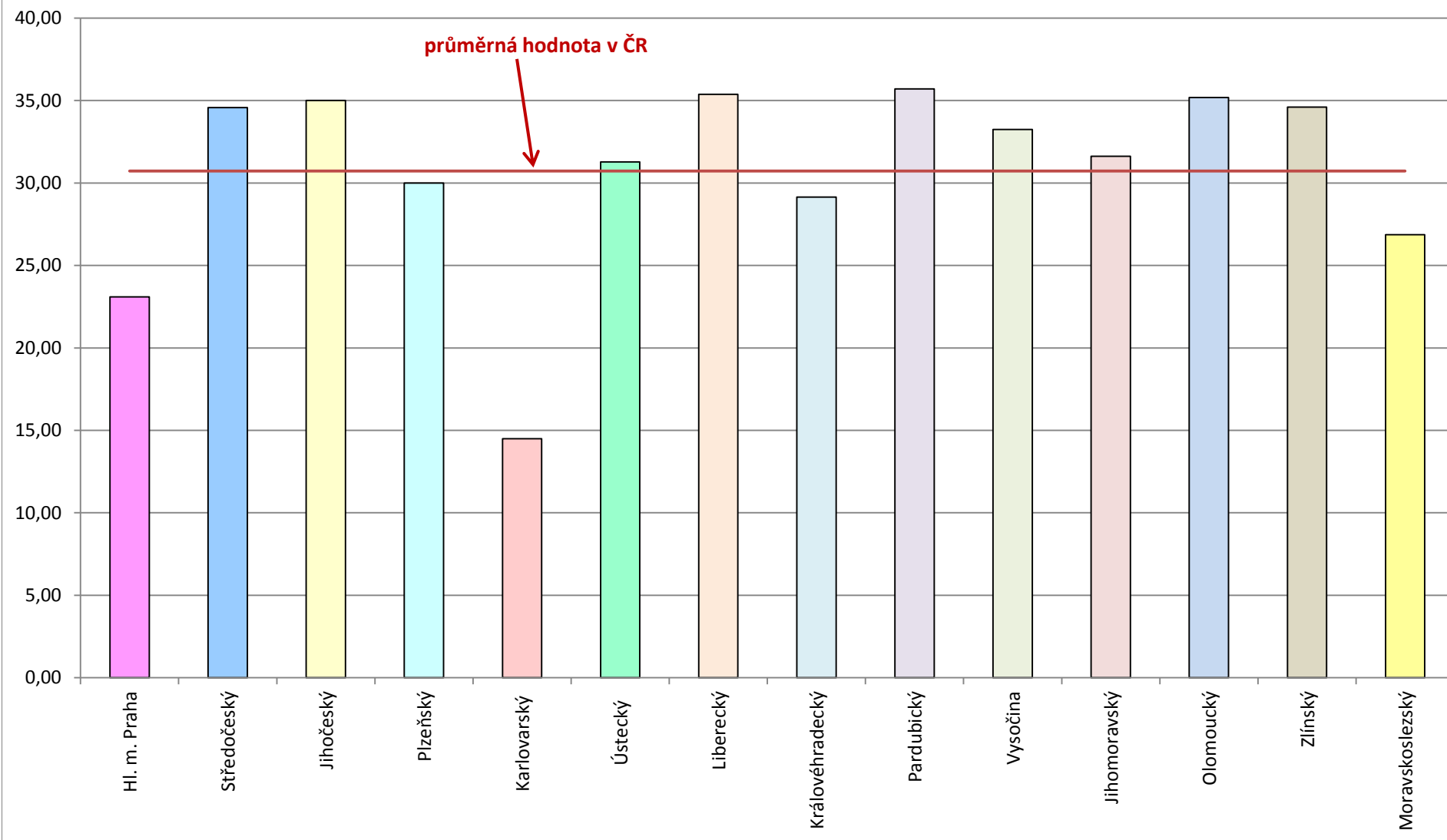
Ukazatel P_p pro stanovení krajského normativu v roce 2015 Domovy mládeže - ubytování ze SŠ nebo konzervatoří (v Kč)



Ukazatel P₀ pro stanovení krajského normativu v roce 2015 Domovy mládeže - ubytování ze SŠ nebo konzervatoří (v Kč)



Ukazatel No pro stanovení krajského normativu v roce 2015 Domovy mládeže - ubytování ze SŠ nebo konzervatoří



Krajské normativy domovy mládeže SŠ, konzervatoře v roce 2015
(v Kč/ubytovaného)

| V | Normativ MP v jednotlivých krajích | | | | | | | | | | | | | | Průměr ČR |
|-----|------------------------------------|-------------|-----------|----------|-------------|---------|-----------|-----------------|------------|----------|--------------|-----------|---------|-----------------|-----------|
| | Hl. m. Praha | Středočeský | Jihočeský | Pízeňský | Karlovarský | Ústecký | Liberecký | Královéhradecký | Pardubický | Vysočina | Jihomoravský | Olomoucký | Zlínský | Moravskoslezský | |
| 10 | 28 902 | 31 539 | 45 618 | 29 386 | 26 405 | 20 838 | 37 369 | 31 463 | 22 482 | 36 186 | 30 609 | 44 012 | 40 168 | 26 840 | 32 273 |
| 20 | 28 902 | 31 539 | 38 617 | 29 386 | 26 405 | 20 838 | 37 369 | 31 463 | 22 482 | 36 186 | 30 609 | 36 126 | 40 140 | 25 054 | 31 080 |
| 30 | 28 902 | 31 539 | 33 660 | 26 968 | 26 405 | 20 838 | 31 910 | 28 262 | 22 482 | 29 524 | 30 609 | 29 139 | 30 976 | 24 147 | 28 240 |
| 40 | 28 624 | 27 631 | 29 964 | 24 971 | 26 405 | 20 838 | 29 033 | 26 020 | 22 482 | 25 898 | 30 609 | 25 810 | 26 898 | 23 560 | 26 339 |
| 50 | 26 465 | 25 190 | 27 103 | 23 663 | 26 405 | 20 838 | 27 192 | 24 382 | 22 482 | 23 739 | 27 674 | 23 770 | 24 511 | 23 123 | 24 753 |
| 60 | 25 006 | 23 551 | 24 823 | 22 722 | 26 405 | 20 730 | 25 884 | 23 131 | 21 186 | 22 273 | 25 751 | 22 378 | 22 910 | 22 787 | 23 538 |
| 70 | 23 938 | 22 356 | 22 963 | 21 997 | 26 405 | 20 613 | 24 893 | 22 153 | 20 229 | 21 198 | 24 359 | 21 352 | 21 744 | 22 511 | 22 622 |
| 80 | 23 114 | 21 437 | 21 600 | 21 417 | 26 405 | 20 507 | 24 107 | 21 385 | 19 484 | 20 368 | 23 291 | 20 541 | 20 849 | 22 273 | 21 913 |
| 90 | 22 454 | 20 948 | 20 850 | 20 942 | 26 405 | 20 403 | 23 463 | 20 760 | 18 883 | 19 701 | 22 449 | 19 893 | 20 133 | 22 078 | 21 383 |
| 100 | 21 909 | 20 771 | 20 165 | 20 534 | 26 405 | 20 291 | 22 698 | 20 259 | 18 385 | 19 150 | 21 758 | 19 360 | 19 544 | 21 906 | 20 938 |
| 110 | 21 450 | 20 614 | 19 535 | 20 192 | 26 405 | 20 190 | 22 059 | 19 848 | 17 963 | 18 685 | 21 174 | 18 902 | 19 049 | 21 746 | 20 558 |
| 120 | 21 056 | 20 474 | 18 954 | 19 886 | 26 405 | 20 089 | 21 514 | 19 507 | 17 600 | 18 287 | 20 680 | 18 515 | 18 624 | 21 615 | 20 229 |
| 130 | 20 712 | 20 347 | 18 536 | 19 620 | 26 405 | 20 018 | 21 042 | 19 223 | 17 282 | 17 939 | 20 255 | 18 169 | 18 255 | 21 487 | 19 949 |
| 140 | 20 410 | 20 231 | 18 232 | 19 378 | 26 405 | 19 973 | 20 629 | 18 988 | 17 002 | 17 632 | 19 875 | 17 867 | 17 931 | 21 368 | 19 709 |
| 150 | 20 141 | 20 125 | 17 960 | 19 162 | 26 405 | 19 929 | 20 263 | 18 792 | 16 751 | 17 359 | 19 543 | 17 597 | 17 642 | 21 268 | 19 495 |
| 160 | 19 899 | 20 027 | 17 716 | 18 966 | 24 252 | 19 884 | 19 935 | 18 626 | 16 526 | 17 114 | 19 246 | 17 356 | 17 383 | 21 170 | 19 150 |
| 170 | 19 680 | 19 936 | 17 494 | 18 788 | 24 252 | 19 841 | 19 640 | 18 488 | 16 322 | 16 891 | 18 974 | 17 135 | 17 149 | 21 080 | 18 977 |
| 180 | 19 481 | 19 851 | 17 292 | 18 626 | 24 252 | 19 797 | 19 373 | 18 376 | 16 136 | 16 689 | 18 725 | 16 934 | 16 936 | 21 000 | 18 819 |
| 190 | 19 299 | 19 772 | 17 107 | 18 474 | 24 252 | 19 754 | 19 128 | 18 272 | 15 965 | 16 504 | 18 504 | 16 750 | 16 742 | 20 921 | 18 675 |
| 200 | 19 131 | 19 697 | 16 936 | 18 337 | 24 252 | 19 719 | 18 904 | 18 187 | 15 807 | 16 334 | 18 296 | 16 583 | 16 562 | 20 842 | 18 542 |
| 210 | 18 976 | 19 627 | 16 778 | 18 202 | 24 252 | 19 676 | 18 697 | 18 113 | 15 661 | 16 176 | 18 106 | 16 425 | 16 397 | 20 772 | 18 418 |
| 220 | 18 832 | 19 561 | 16 630 | 18 081 | 24 252 | 19 634 | 18 506 | 18 052 | 15 525 | 16 029 | 17 933 | 16 277 | 16 243 | 20 710 | 18 305 |
| 230 | 18 697 | 19 498 | 16 493 | 17 968 | 24 252 | 19 591 | 18 327 | 17 997 | 15 399 | 15 892 | 17 770 | 16 142 | 16 100 | 20 648 | 18 198 |
| 240 | 18 572 | 19 438 | 16 364 | 17 857 | 24 252 | 19 549 | 18 161 | 17 948 | 15 280 | 15 764 | 17 616 | 16 011 | 15 966 | 20 589 | 18 098 |
| 250 | 18 454 | 19 381 | 16 244 | 17 759 | 24 252 | 19 507 | 18 137 | 17 904 | 15 169 | 15 644 | 17 472 | 15 892 | 15 841 | 20 533 | 18 013 |
| 260 | 18 343 | 19 327 | 16 130 | 17 661 | 24 252 | 19 466 | 18 114 | 17 867 | 15 169 | 15 532 | 17 336 | 15 780 | 15 723 | 20 480 | 17 941 |
| 270 | 18 238 | 19 276 | 16 023 | 17 571 | 24 252 | 19 432 | 18 092 | 17 829 | 15 169 | 15 425 | 17 213 | 15 670 | 15 612 | 20 429 | 17 874 |
| 280 | 18 140 | 19 226 | 15 921 | 17 511 | 24 252 | 19 391 | 18 071 | 17 797 | 15 169 | 15 324 | 17 092 | 15 572 | 15 507 | 20 380 | 17 811 |
| 290 | 18 046 | 19 179 | 15 825 | 17 511 | 24 252 | 19 350 | 18 051 | 17 765 | 15 169 | 15 229 | 16 979 | 15 476 | 15 407 | 20 333 | 17 755 |
| 300 | 17 957 | 19 133 | 15 733 | 17 511 | 24 252 | 19 309 | 18 031 | 17 734 | 15 169 | 15 139 | 16 868 | 15 385 | 15 313 | 20 288 | 17 702 |
| 310 | 17 873 | 19 089 | 15 678 | 17 511 | 24 252 | | 18 012 | 17 707 | 15 169 | 15 054 | 16 735 | 14 758 | 15 384 | 20 245 | 17 497 |
| 320 | 17 792 | 19 047 | 15 641 | 17 511 | 24 252 | | 17 994 | 17 681 | 15 169 | 15 042 | 16 721 | 14 744 | 15 371 | 20 204 | 17 475 |
| 330 | 17 715 | 19 007 | 15 604 | 17 511 | 24 252 | | 17 976 | 17 660 | 15 169 | 15 029 | 16 707 | 14 731 | 15 358 | 20 163 | 17 453 |
| 340 | 17 642 | 18 967 | 15 568 | 17 511 | 24 252 | | 17 959 | 17 634 | 15 169 | 15 017 | 16 693 | 14 718 | 15 345 | 20 125 | 17 431 |
| 350 | 17 572 | 18 930 | 15 531 | 17 511 | 24 252 | | 17 943 | 17 619 | 15 169 | 15 006 | 16 679 | 14 709 | 15 333 | 20 087 | 17 411 |
| 360 | 17 504 | 18 893 | 15 495 | 17 511 | 24 252 | | 17 927 | 17 598 | 15 169 | 14 995 | 16 665 | 14 696 | 15 321 | 20 051 | 17 391 |
| 370 | 17 440 | 18 858 | 15 460 | 17 511 | 24 252 | | 17 911 | 17 588 | 15 169 | 14 984 | 16 656 | 14 687 | 15 309 | 20 016 | 17 372 |
| 380 | 17 377 | 18 823 | 15 424 | 17 511 | 24 252 | | 17 896 | 17 573 | 15 169 | 14 974 | 16 642 | 14 674 | 15 298 | 19 983 | 17 354 |
| 390 | 17 318 | 18 790 | 15 389 | 17 511 | 24 252 | | 17 881 | 17 568 | 15 169 | 14 964 | 16 628 | 14 666 | 15 287 | 19 950 | 17 336 |
| 400 | 17 260 | 18 758 | 15 353 | 17 511 | 24 252 | | 17 867 | 17 562 | 15 169 | 14 954 | 16 619 | 14 657 | 15 277 | 19 918 | 17 320 |
| 410 | 17 205 | 18 727 | 15 319 | 17 511 | 24 252 | | 17 853 | 17 562 | 15 169 | 14 944 | 16 605 | 14 644 | 15 266 | 19 887 | 17 303 |
| 420 | 17 151 | 18 696 | 15 284 | 17 511 | 24 252 | | 17 840 | 17 562 | 15 169 | 14 935 | 16 596 | 14 635 | 15 256 | 19 857 | 17 288 |
| 430 | 17 100 | 18 667 | 15 249 | 17 511 | 24 252 | | | 17 562 | 15 169 | 14 926 | 16 587 | 14 627 | 15 247 | 19 828 | 17 227 |
| 440 | 17 050 | 18 638 | 15 215 | 17 511 | 24 252 | | | 17 562 | 15 169 | 14 917 | 16 573 | 14 618 | 15 237 | 19 799 | 17 212 |
| 450 | 17 001 | 18 610 | 15 181 | 17 511 | 24 252 | | | 17 562 | 15 169 | 14 908 | 16 564 | 14 610 | 15 228 | 19 772 | 17 197 |
| 460 | 16 955 | 18 583 | 15 147 | 17 511 | 24 252 | | | 17 562 | 15 169 | 14 900 | 16 555 | 14 601 | 15 219 | 19 745 | 17 183 |
| 470 | 16 909 | 18 556 | 15 114 | 17 511 | 24 252 | | | 17 562 | 15 169 | 14 891 | 16 546 | 14 592 | 15 210 | 19 719 | 17 169 |
| 480 | 16 865 | 18 530 | 15 080 | 17 511 | 24 252 | | | 17 562 | 15 169 | 14 883 | 16 537 | 14 584 | 15 201 | 19 693 | 17 156 |
| 490 | 16 823 | 18 505 | 15 047 | 17 511 | 24 252 | | | 17 562 | 15 169 | 14 875 | 16 528 | 14 575 | 15 193 | 19 668 | 17 142 |
| 500 | 16 781 | 18 480 | 15 014 | 17 511 | 24 252 | | | 17 562 | 15 169 | 14 867 | 16 519 | 14 571 | 15 184 | 19 644 | 17 130 |

Krajské normativy domovy mládeže SŠ, konzervatoře v roce 2015
(v Kč/ubytovaného)

| V | Normativ ONIV v jednotlivých krajích | | | | | | | | | | | | | | Průměr ČR |
|-----|--------------------------------------|-------------|-----------|----------|-------------|---------|-----------|-----------------|------------|----------|--------------|-----------|---------|-----------------|-----------|
| | Hl. m. Praha | Středočeský | Jihočeský | Plzeňský | Karlovarský | Ústecký | Liberecký | Královéhradecký | Pardubický | Vysočina | Jihomoravský | Olomoucký | Zlínský | Moravskoslezský | |
| 10 | 340 | 380 | 435 | 210 | 450 | 198 | 300 | 346 | 295 | 402 | 380 | 412 | 190 | 290 | 331 |
| 20 | 340 | 380 | 435 | 210 | 450 | 198 | 300 | 346 | 295 | 402 | 380 | 412 | 190 | 290 | 331 |
| 30 | 340 | 380 | 435 | 210 | 450 | 198 | 300 | 333 | 295 | 357 | 380 | 412 | 190 | 290 | 326 |
| 40 | 340 | 380 | 435 | 210 | 450 | 198 | 300 | 323 | 295 | 333 | 380 | 412 | 190 | 290 | 324 |
| 50 | 340 | 380 | 435 | 210 | 450 | 198 | 300 | 316 | 295 | 319 | 380 | 412 | 190 | 290 | 323 |
| 60 | 340 | 380 | 435 | 210 | 450 | 197 | 300 | 311 | 288 | 309 | 380 | 412 | 190 | 290 | 321 |
| 70 | 340 | 380 | 435 | 210 | 450 | 197 | 300 | 307 | 284 | 302 | 380 | 412 | 190 | 290 | 320 |
| 80 | 340 | 380 | 435 | 210 | 450 | 196 | 300 | 304 | 280 | 296 | 380 | 412 | 190 | 290 | 319 |
| 90 | 340 | 380 | 435 | 210 | 450 | 196 | 300 | 301 | 277 | 292 | 380 | 412 | 190 | 290 | 318 |
| 100 | 340 | 380 | 435 | 210 | 450 | 195 | 300 | 299 | 274 | 288 | 380 | 412 | 190 | 290 | 317 |
| 110 | 340 | 380 | 435 | 210 | 450 | 195 | 300 | 297 | 272 | 285 | 380 | 412 | 190 | 290 | 317 |
| 120 | 340 | 380 | 435 | 210 | 450 | 194 | 300 | 296 | 270 | 282 | 380 | 412 | 190 | 290 | 316 |
| 130 | 340 | 380 | 435 | 210 | 450 | 194 | 300 | 295 | 269 | 280 | 380 | 412 | 190 | 290 | 316 |
| 140 | 340 | 380 | 435 | 210 | 450 | 194 | 300 | 294 | 267 | 278 | 380 | 412 | 190 | 290 | 316 |
| 150 | 340 | 380 | 435 | 210 | 450 | 194 | 300 | 293 | 266 | 276 | 380 | 412 | 190 | 290 | 315 |
| 160 | 340 | 380 | 435 | 210 | 450 | 194 | 300 | 292 | 265 | 274 | 380 | 412 | 190 | 290 | 315 |
| 170 | 340 | 380 | 435 | 210 | 450 | 193 | 300 | 292 | 264 | 273 | 380 | 412 | 190 | 290 | 315 |
| 180 | 340 | 380 | 435 | 210 | 450 | 193 | 300 | 291 | 263 | 271 | 380 | 412 | 190 | 290 | 315 |
| 190 | 340 | 380 | 435 | 210 | 450 | 193 | 300 | 291 | 262 | 270 | 380 | 412 | 190 | 290 | 314 |
| 200 | 340 | 380 | 435 | 210 | 450 | 193 | 300 | 290 | 261 | 269 | 380 | 412 | 190 | 290 | 314 |
| 210 | 340 | 380 | 435 | 210 | 450 | 193 | 300 | 290 | 260 | 268 | 380 | 412 | 190 | 290 | 314 |
| 220 | 340 | 380 | 435 | 210 | 450 | 192 | 300 | 290 | 260 | 267 | 380 | 412 | 190 | 290 | 314 |
| 230 | 340 | 380 | 435 | 210 | 450 | 192 | 300 | 290 | 259 | 266 | 380 | 412 | 190 | 290 | 314 |
| 240 | 340 | 380 | 435 | 210 | 450 | 192 | 300 | 289 | 258 | 265 | 380 | 412 | 190 | 290 | 314 |
| 250 | 340 | 380 | 435 | 210 | 450 | 192 | 300 | 289 | 258 | 265 | 380 | 412 | 190 | 290 | 314 |
| 260 | 340 | 380 | 435 | 210 | 450 | 192 | 300 | 289 | 258 | 264 | 380 | 412 | 190 | 290 | 314 |
| 270 | 340 | 380 | 435 | 210 | 450 | 192 | 300 | 289 | 258 | 263 | 380 | 412 | 190 | 290 | 313 |
| 280 | 340 | 380 | 435 | 210 | 450 | 191 | 300 | 289 | 258 | 262 | 380 | 412 | 190 | 290 | 313 |
| 290 | 340 | 380 | 435 | 210 | 450 | 191 | 300 | 289 | 258 | 262 | 380 | 412 | 190 | 290 | 313 |
| 300 | 340 | 380 | 435 | 210 | 450 | 191 | 300 | 289 | 258 | 261 | 380 | 412 | 190 | 290 | 313 |
| 310 | 340 | 380 | 435 | 210 | 450 | | 300 | 288 | 258 | 261 | 380 | 412 | 190 | 290 | 323 |
| 320 | 340 | 380 | 435 | 210 | 450 | | 300 | 288 | 258 | 260 | 380 | 412 | 190 | 290 | 323 |
| 330 | 340 | 380 | 435 | 210 | 450 | | 300 | 288 | 258 | 260 | 380 | 412 | 190 | 290 | 323 |
| 340 | 340 | 380 | 435 | 210 | 450 | | 300 | 288 | 258 | 260 | 380 | 412 | 190 | 290 | 323 |
| 350 | 340 | 380 | 435 | 210 | 450 | | 300 | 288 | 258 | 260 | 380 | 412 | 190 | 290 | 323 |
| 360 | 340 | 380 | 435 | 210 | 450 | | 300 | 288 | 258 | 260 | 380 | 412 | 190 | 290 | 323 |
| 370 | 340 | 380 | 435 | 210 | 450 | | 300 | 288 | 258 | 260 | 380 | 412 | 190 | 290 | 323 |
| 380 | 340 | 380 | 435 | 210 | 450 | | 300 | 288 | 258 | 260 | 380 | 412 | 190 | 290 | 323 |
| 390 | 340 | 380 | 435 | 210 | 450 | | 300 | 288 | 258 | 260 | 380 | 412 | 190 | 290 | 323 |
| 400 | 340 | 380 | 435 | 210 | 450 | | 300 | 288 | 258 | 260 | 380 | 412 | 190 | 290 | 323 |
| 410 | 340 | 380 | 435 | 210 | 450 | | 300 | 288 | 258 | 260 | 380 | 412 | 190 | 290 | 323 |
| 420 | 340 | 380 | 435 | 210 | 450 | | 300 | 288 | 258 | 260 | 380 | 412 | 190 | 290 | 323 |
| 430 | 340 | 380 | 435 | 210 | 450 | | | 288 | 258 | 260 | 380 | 412 | 190 | 290 | 324 |
| 440 | 340 | 380 | 435 | 210 | 450 | | | 288 | 258 | 260 | 380 | 412 | 190 | 290 | 324 |
| 450 | 340 | 380 | 435 | 210 | 450 | | | 288 | 258 | 260 | 380 | 412 | 190 | 290 | 324 |
| 460 | 340 | 380 | 435 | 210 | 450 | | | 288 | 258 | 260 | 380 | 412 | 190 | 290 | 324 |
| 470 | 340 | 380 | 435 | 210 | 450 | | | 288 | 258 | 259 | 380 | 412 | 190 | 290 | 324 |
| 480 | 340 | 380 | 435 | 210 | 450 | | | 288 | 258 | 252 | 380 | 412 | 190 | 290 | 324 |
| 490 | 340 | 380 | 435 | 210 | 450 | | | 288 | 258 | 248 | 380 | 412 | 190 | 290 | 323 |
| 500 | 340 | 380 | 435 | 210 | 450 | | | 288 | 258 | 245 | 380 | 412 | 190 | 290 | 323 |

Krajské normativy domovy mládeže SŠ, konzervatoře v roce 2015

| V | Ukazatel Np v jednotlivých krajích | | | | | | | | | | | | | | Průměr ČR |
|-----|------------------------------------|-------------|-----------|----------|-------------|---------|-----------|-----------------|------------|----------|--------------|-----------|---------|-----------------|-----------|
| | Hl. m. Praha | Středočeský | Jihočeský | Plzeňský | Karlovarský | Ústecký | Liberecký | Královéhradecký | Pardubický | Vysočina | Jihomoravský | Olomoucký | Zlínský | Moravskoslezský | |
| 10 | 13,34 | 10,87 | 6,73 | 12,00 | 18,00 | 16,10 | 9,25 | 10,73 | 14,99 | 8,77 | 11,29 | 6,85 | 7,64 | 13,59 | 11,44 |
| 20 | 13,34 | 10,87 | 8,12 | 12,00 | 18,00 | 16,10 | 9,25 | 10,73 | 14,99 | 8,77 | 11,29 | 8,55 | 7,65 | 14,86 | 11,75 |
| 30 | 13,34 | 10,87 | 9,51 | 13,36 | 18,00 | 16,10 | 11,13 | 12,25 | 14,99 | 11,11 | 11,29 | 10,96 | 10,31 | 15,60 | 12,77 |
| 40 | 13,52 | 12,72 | 10,89 | 14,74 | 18,00 | 16,10 | 12,46 | 13,60 | 14,99 | 12,99 | 11,29 | 12,66 | 12,19 | 16,12 | 13,73 |
| 50 | 15,07 | 14,24 | 12,28 | 15,81 | 18,00 | 16,10 | 13,49 | 14,79 | 14,99 | 14,46 | 12,76 | 13,99 | 13,66 | 16,53 | 14,73 |
| 60 | 16,34 | 15,47 | 13,67 | 16,68 | 18,00 | 16,21 | 14,33 | 15,85 | 16,15 | 15,65 | 13,95 | 15,07 | 14,85 | 16,86 | 15,65 |
| 70 | 17,41 | 16,52 | 15,05 | 17,42 | 18,00 | 16,33 | 15,04 | 16,79 | 17,13 | 16,66 | 14,96 | 15,98 | 15,86 | 17,14 | 16,45 |
| 80 | 18,34 | 17,43 | 16,26 | 18,06 | 18,00 | 16,44 | 15,66 | 17,61 | 17,98 | 17,54 | 15,84 | 16,78 | 16,74 | 17,39 | 17,15 |
| 90 | 19,16 | 17,95 | 17,01 | 18,62 | 18,00 | 16,55 | 16,20 | 18,34 | 18,73 | 18,31 | 16,61 | 17,48 | 17,51 | 17,60 | 17,72 |
| 100 | 19,89 | 18,15 | 17,77 | 19,13 | 18,00 | 16,67 | 16,90 | 18,97 | 19,40 | 19,00 | 17,30 | 18,10 | 18,20 | 17,79 | 18,23 |
| 110 | 20,56 | 18,33 | 18,52 | 19,58 | 18,00 | 16,78 | 17,53 | 19,52 | 20,01 | 19,63 | 17,93 | 18,67 | 18,83 | 17,97 | 18,70 |
| 120 | 21,16 | 18,49 | 19,27 | 20,00 | 18,00 | 16,89 | 18,11 | 20,00 | 20,56 | 20,20 | 18,50 | 19,18 | 19,40 | 18,12 | 19,13 |
| 130 | 21,72 | 18,64 | 19,85 | 20,38 | 18,00 | 16,97 | 18,64 | 20,42 | 21,07 | 20,72 | 19,02 | 19,66 | 19,92 | 18,27 | 19,52 |
| 140 | 22,23 | 18,78 | 20,29 | 20,74 | 18,00 | 17,02 | 19,13 | 20,78 | 21,54 | 21,21 | 19,51 | 20,10 | 20,41 | 18,41 | 19,87 |
| 150 | 22,71 | 18,91 | 20,70 | 21,07 | 18,00 | 17,07 | 19,59 | 21,09 | 21,98 | 21,66 | 19,96 | 20,51 | 20,86 | 18,53 | 20,19 |
| 160 | 23,16 | 19,03 | 21,09 | 21,38 | 21,00 | 17,12 | 20,02 | 21,36 | 22,39 | 22,08 | 20,38 | 20,89 | 21,28 | 18,65 | 20,70 |
| 170 | 23,58 | 19,14 | 21,45 | 21,67 | 21,00 | 17,17 | 20,42 | 21,59 | 22,78 | 22,48 | 20,78 | 21,25 | 21,68 | 18,76 | 20,98 |
| 180 | 23,98 | 19,25 | 21,80 | 21,94 | 21,00 | 17,22 | 20,80 | 21,78 | 23,14 | 22,86 | 21,16 | 21,59 | 22,06 | 18,86 | 21,24 |
| 190 | 24,36 | 19,35 | 22,12 | 22,20 | 21,00 | 17,27 | 21,16 | 21,96 | 23,48 | 23,21 | 21,51 | 21,91 | 22,41 | 18,96 | 21,49 |
| 200 | 24,72 | 19,45 | 22,43 | 22,44 | 21,00 | 17,31 | 21,50 | 22,11 | 23,81 | 23,55 | 21,85 | 22,21 | 22,75 | 19,06 | 21,73 |
| 210 | 25,06 | 19,54 | 22,72 | 22,68 | 21,00 | 17,36 | 21,82 | 22,24 | 24,12 | 23,87 | 22,17 | 22,50 | 23,07 | 19,15 | 21,95 |
| 220 | 25,38 | 19,63 | 23,00 | 22,90 | 21,00 | 17,41 | 22,13 | 22,35 | 24,42 | 24,17 | 22,47 | 22,78 | 23,37 | 19,23 | 22,16 |
| 230 | 25,69 | 19,71 | 23,26 | 23,11 | 21,00 | 17,46 | 22,42 | 22,45 | 24,70 | 24,46 | 22,76 | 23,04 | 23,66 | 19,31 | 22,36 |
| 240 | 25,98 | 19,79 | 23,52 | 23,32 | 21,00 | 17,51 | 22,71 | 22,54 | 24,97 | 24,74 | 23,04 | 23,30 | 23,94 | 19,39 | 22,55 |
| 250 | 26,27 | 19,87 | 23,76 | 23,51 | 21,00 | 17,56 | 22,75 | 22,62 | 25,23 | 25,01 | 23,31 | 23,54 | 24,21 | 19,46 | 22,72 |
| 260 | 26,54 | 19,94 | 24,00 | 23,70 | 21,00 | 17,61 | 22,79 | 22,69 | 25,23 | 25,27 | 23,57 | 23,77 | 24,47 | 19,53 | 22,86 |
| 270 | 26,80 | 20,01 | 24,23 | 23,88 | 21,00 | 17,65 | 22,83 | 22,76 | 25,23 | 25,51 | 23,81 | 24,00 | 24,71 | 19,60 | 23,00 |
| 280 | 27,06 | 20,08 | 24,44 | 24,00 | 21,00 | 17,70 | 22,86 | 22,82 | 25,23 | 25,75 | 24,05 | 24,21 | 24,95 | 19,67 | 23,13 |
| 290 | 27,30 | 20,14 | 24,65 | 24,00 | 21,00 | 17,75 | 22,90 | 22,88 | 25,23 | 25,98 | 24,28 | 24,42 | 25,18 | 19,73 | 23,25 |
| 300 | 27,54 | 20,21 | 24,86 | 24,00 | 21,00 | 17,80 | 22,93 | 22,94 | 25,23 | 26,21 | 24,51 | 24,62 | 25,41 | 19,80 | 23,36 |
| 310 | 27,77 | 20,27 | 24,98 | 24,00 | 21,00 | | 22,97 | 22,99 | 25,23 | 26,42 | 24,79 | 24,81 | 25,24 | 19,86 | 23,87 |
| 320 | 27,99 | 20,33 | 25,06 | 24,00 | 21,00 | | 23,00 | 23,04 | 25,23 | 26,45 | 24,82 | 24,84 | 25,27 | 19,91 | 23,92 |
| 330 | 28,20 | 20,39 | 25,15 | 24,00 | 21,00 | | 23,03 | 23,08 | 25,23 | 26,48 | 24,85 | 24,87 | 25,30 | 19,97 | 23,96 |
| 340 | 28,41 | 20,44 | 25,23 | 24,00 | 21,00 | | 23,06 | 23,13 | 25,23 | 26,51 | 24,88 | 24,90 | 25,33 | 20,02 | 24,01 |
| 350 | 28,61 | 20,50 | 25,32 | 24,00 | 21,00 | | 23,09 | 23,16 | 25,23 | 26,54 | 24,91 | 24,92 | 25,36 | 20,08 | 24,05 |
| 360 | 28,81 | 20,55 | 25,40 | 24,00 | 21,00 | | 23,12 | 23,20 | 25,23 | 26,57 | 24,94 | 24,95 | 25,39 | 20,13 | 24,10 |
| 370 | 29,00 | 20,60 | 25,49 | 24,00 | 21,00 | | 23,15 | 23,22 | 25,23 | 26,59 | 24,96 | 24,97 | 25,41 | 20,18 | 24,14 |
| 380 | 29,18 | 20,65 | 25,57 | 24,00 | 21,00 | | 23,17 | 23,25 | 25,23 | 26,62 | 24,99 | 25,00 | 25,44 | 20,23 | 24,18 |
| 390 | 29,36 | 20,70 | 25,65 | 24,00 | 21,00 | | 23,20 | 23,26 | 25,23 | 26,65 | 25,02 | 25,02 | 25,47 | 20,27 | 24,22 |
| 400 | 29,54 | 20,75 | 25,74 | 24,00 | 21,00 | | 23,22 | 23,27 | 25,23 | 26,67 | 25,04 | 25,04 | 25,49 | 20,32 | 24,25 |
| 410 | 29,71 | 20,79 | 25,82 | 24,00 | 21,00 | | 23,25 | 23,27 | 25,23 | 26,70 | 25,07 | 25,07 | 25,52 | 20,37 | 24,29 |
| 420 | 29,88 | 20,84 | 25,91 | 24,00 | 21,00 | | 23,27 | 23,27 | 25,23 | 26,72 | 25,09 | 25,09 | 25,54 | 20,41 | 24,33 |
| 430 | 30,04 | 20,88 | 25,99 | 24,00 | 21,00 | | | 23,27 | 25,23 | 26,74 | 25,11 | 25,11 | 25,56 | 20,45 | 24,45 |
| 440 | 30,20 | 20,92 | 26,07 | 24,00 | 21,00 | | | 23,27 | 25,23 | 26,77 | 25,14 | 25,13 | 25,59 | 20,49 | 24,48 |
| 450 | 30,36 | 20,97 | 26,16 | 24,00 | 21,00 | | | 23,27 | 25,23 | 26,79 | 25,16 | 25,15 | 25,61 | 20,53 | 24,52 |
| 460 | 30,51 | 21,01 | 26,24 | 24,00 | 21,00 | | | 23,27 | 25,23 | 26,81 | 25,18 | 25,17 | 25,63 | 20,57 | 24,55 |
| 470 | 30,66 | 21,05 | 26,33 | 24,00 | 21,00 | | | 23,27 | 25,23 | 26,83 | 25,20 | 25,19 | 25,65 | 20,61 | 24,59 |
| 480 | 30,81 | 21,09 | 26,41 | 24,00 | 21,00 | | | 23,27 | 25,23 | 26,85 | 25,22 | 25,21 | 25,67 | 20,65 | 24,62 |
| 490 | 30,95 | 21,13 | 26,49 | 24,00 | 21,00 | | | 23,27 | 25,23 | 26,87 | 25,24 | 25,23 | 25,69 | 20,69 | 24,65 |
| 500 | 31,09 | 21,16 | 26,58 | 24,00 | 21,00 | | | 23,27 | 25,23 | 26,90 | 25,26 | 25,24 | 25,71 | 20,73 | 24,68 |